



For Sales Information:  
sales@serialcables.com  
(303)495-2320  
<http://www.serialcables.com>



## 24-port 2.5" Test Enclosure

- 24 tool-less, 2.5", drive fixtures w/individual, replaceable interposers. Fixtures fit all thicknesses of 2.5" HDD/SSD. (2 fixture versions are available)
- Individual activity LED on each slot designed for both SAS and SATA activity
- Individual power on/off control via CLI through USB/Telnet/Ethernet
- Individual voltage/current measurement via CLI through USB/Telnet/Ethernet
- 800W power supply capable of 90A Max on 5v and 40A Max on 12v. Per/Slot limits of 4A at 5v and 1.6A on 12v. Power supply can operate in up to 70C environments.
- Direct attach SAS and SATA configuration w/dual port supported in SAS version. (Each x4 external connector is directly cabled to 4 individual drive slots)
- 19" rack mountable configuration
- (4) 4" 65cfm cooling fans
- Available for 6 GB/s SAS and SATA, 12 GB/s SAS and coming soon, Gen3 PCIe (SFF-8639). External connections for 6 GB/s SAS is SFF-8088 and for 12 GB/s SAS is SFF-8644.
- Box dimensions: 16" x 16" x 16"





For Sales Information:  
sales@serialcables.com  
(303)495-2320  
<http://www.serialcables.com>

## QTL1574 Power Board

The Quarch Technology 24 Port Power Switch board can independently switch 12V and 5V power to 24 drive ports. The board can also measure voltage at and current supplied to each drive port independently and assert a drives DEV\_SLEEP pin where supported by the drive.

### Technical Specifications:

#### Voltage Measurement

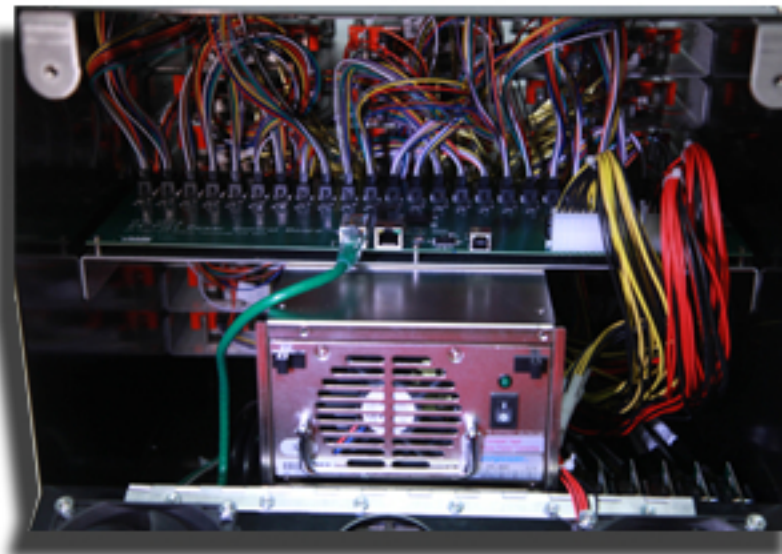
Resolution: 1.25mV  
Typical Accuracy: 1%  
Worst Case Accuracy: 5%

#### Current Measurement

Range: -8A to 8A  
Resolution: 0.25mA  
Typical Accuracy:  $\pm(2\text{mA} + 1\%)$   
Worst Case Accuracy:  $\pm(2\text{mA} + 5\%)$

#### Sampling

Serial 115,200 baud: < 0.1 seconds (better than 10 per second)  
Telnet: ~0.15 Seconds (~6 per second)  
USB: ~0.1 Seconds (~10 per second)





For Sales Information:  
sales@serialcables.com  
(303)495-2320  
<http://www.serialcables.com>

## Power Supply Specifications

### DESCRIPTION

THE RPS-2800 IS A TRIPLE OUTPUT 400W, AC INPUT SELECTOR OR AUTO SENSING CONTROL SWITCH MODE POWER SUPPLY. IT IS MADE OF N=1 MODULE WITH THE RPM/RPH SYSTEM FOR NETWORK FILE SERVER, RAID SUB-SYSTEM, SECURITY TELECOMMUNICATION SYSTEMS APPLICATIONS.

### AC INPUT :

#### VOLTAGE & FREQUENCY :

115V / 60HZ : 90V (MIN.) --- 115V (NORMAL) --- 132V(MAX.)  
230V / 50HZ : 180V (MIN.) --- 230V (NORMAL) --- 264V(MAX.)  
\*115V/230V MANUAL SELECT OR AUTO SWITCH (OPTIONAL).

### CURRENT :

10A MAX. AT 115V AC INPUT, FULL LOAD CONDITION .  
5A MAX. AT 230V AC INPUT, FULL LOAD CONDITION.

### INRUSH CURRENT :

80A MAX. AT 115V AC IN, FULL LOAD CONDITION.  
120A MAX. AT 230V AC IN, FULL LOAD CONDITION.  
\* COLD START, AT 25 DEGREE C AMBIENT.

### DC OUTPUT :

VOLTAGE +5V +12V -12V

MIN. LOAD 4 A 1.5 A 0 A

MAX. LOAD 40 A 16 A 1.5 A

REGULATION +5/-4% +5/-5% +5/-5%

RIPPLE & NOISE (MAX.) 70mV 120mV 120mV

\*\* MAXIMUM POWER OUTPUT OF ALL OUTPUTS COMBINED MUST NOT EXCEED 400 WATTS.

THE LOAD REGULATION IS DONE BY CHANGING THE MEASURED OUTPUT LOADING +/-40% FROM 60% RATED LOAD.

### PHYSICAL ENVIRONMENT (AMBIENT) :

#### TEMPERATURE RANGE :

OPERATING TEMPERATURE RANGE : 0° ~ 70°

DERATING FACTOR 50° ~ 70° : 2.5%

STORAGE -10° TO +75°

#### HUMIDITY :

OPERATION 20% TO 85% RH.

STORAGE AND SHIPPING 10% TO 95%RH.