

RoHS

9

8

7

6

5

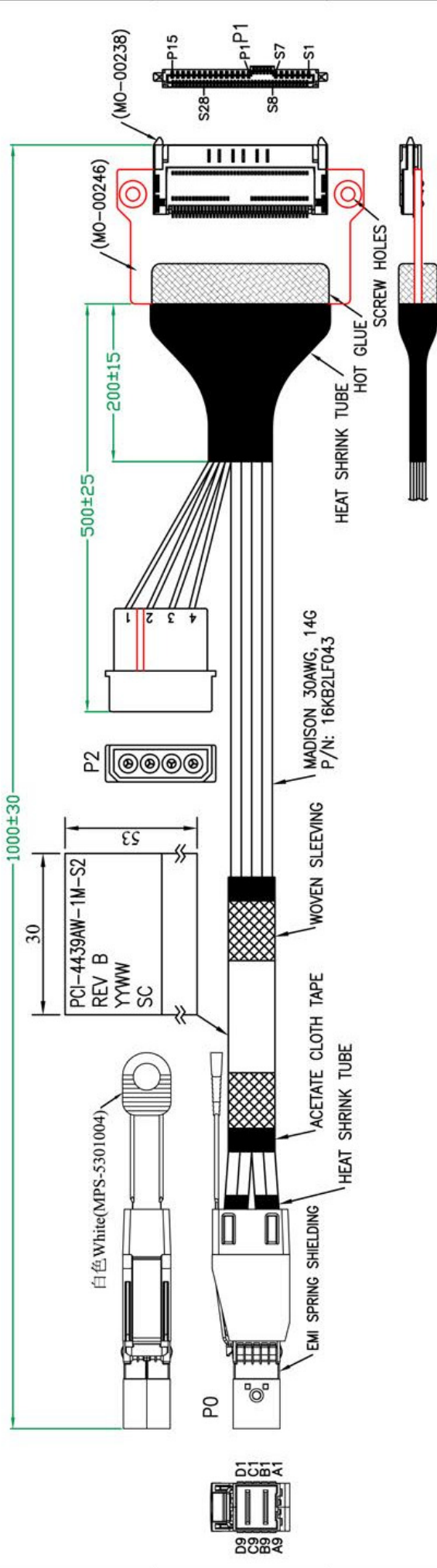
4

3

2

1

REV.	REMARK	DATE	SIGN.



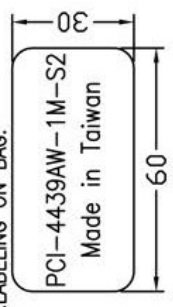
MATERIAL ROHS COMPLIANT:

- 1.CABLE SPEC:
 CONDUCTOR: 30AWG SOLID SILVER PLATED COPPER.
 INSULATION: FOAM POLYOLEFIN.
 PAIR: 2 SINGLES LAY FLAT AND PARALLEL.
 PAIR DRAIN WIRE: 30AWG SOLID SILVER PLATED COPPER.
 PAIR SHIELD: ALUMINUM/POLYESTER TAPE,
 ALUMINUM SIDE FACING IN, 25% OVERLAP.
 INNER SHIELD: ALUMINUM/POLYESTER TAPE,
 ALUMINUM SIDE FACING OUT, 25% OVERLAP.
 DIFFERENTIAL IMPEDANCE: 100±5 OHMS @TDR
 UL LISTING: TYPE CL2 AS SPECIFIED IN ARTICLE 725
 OF THE NATIONAL ELECTRICAL CODE.

2.CONNECTOR:

- PO: Mini SAS HD 4x CABLE PLUG (SFF-8644)
 (1) P.C.B: 4 LAYERS, GOLD PLATING ON CONTACT PADS, WITHOUT CARBON (P/N: MPCB-060003LF REV.B / MPCB-060004LF REV.B)
 (2) LATCH: STAINLESS STEEL
 (3) BACKSHELL: ZINC DIE CASTING HOOD/ NICKEL PLATING
 (4) PULL TAB: NYLON UL94V-0, COLOR: WHITE(MPS-5301004)
 (5) EMI SPRING SHIELDING
 P1: Multifunction 12Gb/s 6x REC.(SFF-8639)(MO-00238)
 (1) P.C.B: 4 LAYERS, GOLD PLATING ON CONTACT PADS(SPCB-040145D)(MO-00246)
 P2: 4 POSITION DC POWER PLUG
 POWER CABLE: UL 1007 18AWG 80°C 300V

3.LABELING ON BAG:



DESC.	SFF8644 TO SFF8639 REC. WITH POWER CABLE ASS'Y	APPROVED		CHECKED		DESIGNED	Sino	TOLERANCE		SCALE		UNIT	mm
P/N	B-5269	CUSTOMER P/N	PCI-4439AW-1M-S2	DATE	09/02/15	DWG NO:	DWG(B)5269						

1

2

3

4

5

6

7

8

9

1	2	3	4	5	6	7	8	9
REV.	REMARK	DATE	SIGN.					

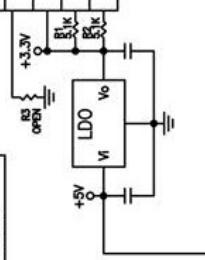
WIRING DIAGRAM *客製化接點

HIGH SPEED SIGNAL

SFF-8644 PLUG (HOST)		SFF-8639 REC. (TARGET)	
PIN	SIGNAL	PIN	SIGNAL
B7	LANE 2	E21	
B8		E20	
D8		E18	
D7		E17	
A4	LANE 1	S21	
A5		S20	
C5		S18	
C4		S17	
B4	LANE 0	E14	
B5		E13	
D5		E11	
D4		E10	
A7	LANE 3	S27	
A8		S26	
C8		S24	
C7		S23	
A3,A6,A9, B3,B6,B9, C3,C6,C9, D3,D6,D9.	GND	S1,S4,S7, S8,S11,S14, S16,S19, S22,S25,S28, E9,E12,E15, E19,E22.	GND

LOW SPEED SIGNAL AND POWER

SFF-8644 PLUG (HOST)		SFF-8639 REC. (TARGET)	
PIN	SIGNAL	PIN	SIGNAL
A1	Rsvd/Sel	E8	
A2		E7	
B1	SCL	E5	ePERstO#
C1		E23	SMClk
C2	SDA	E24	SMDat
		E25	DualportEn#
		E3	3.3Vaux
		P4	IfDet#
		P10	PRsNT#



4P POWER PLUG		SFF-8639 REC. (TARGET)	
PIN	SIGNAL	PIN	SIGNAL
1	+12V	E2	
2,3	GND	E3	
4	+5V	P4	IfDet#



DESC.	SFF8644 TO SFF8639 REC. WITH POWER CABLE ASS'Y	APPROVED	CHECKED	DESIGNED	TOLERANCE
P/N	B-5269	CUSTOMER P/N	PCI-4439AW-1M-S2	Sino	

DATE	09/02/15	SCALE	*	UNIT	mm
DWG NO:	DWG\B\5269				

DATE	09/02/15	SCALE	*	UNIT	mm
DWG NO:	DWG\B\5269				