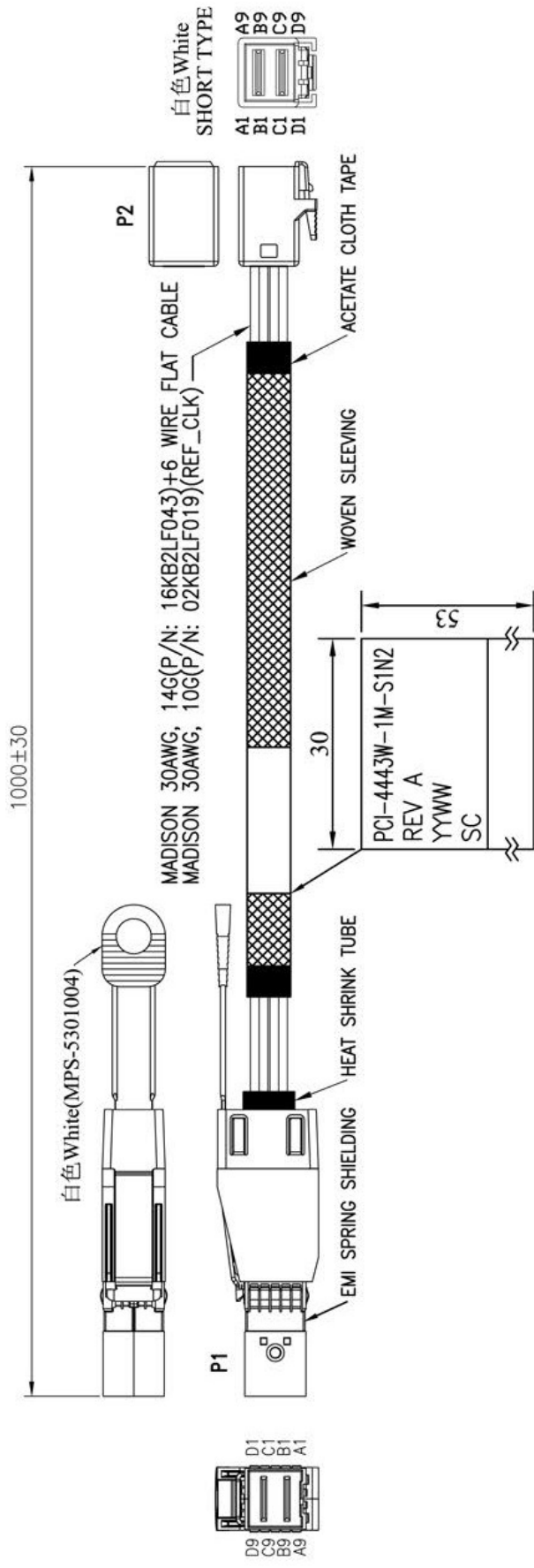


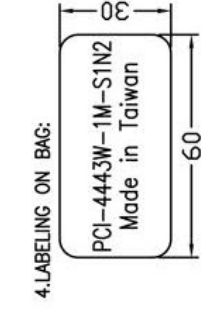
RoHS

REV.	REMARK	DATE	SIGN.

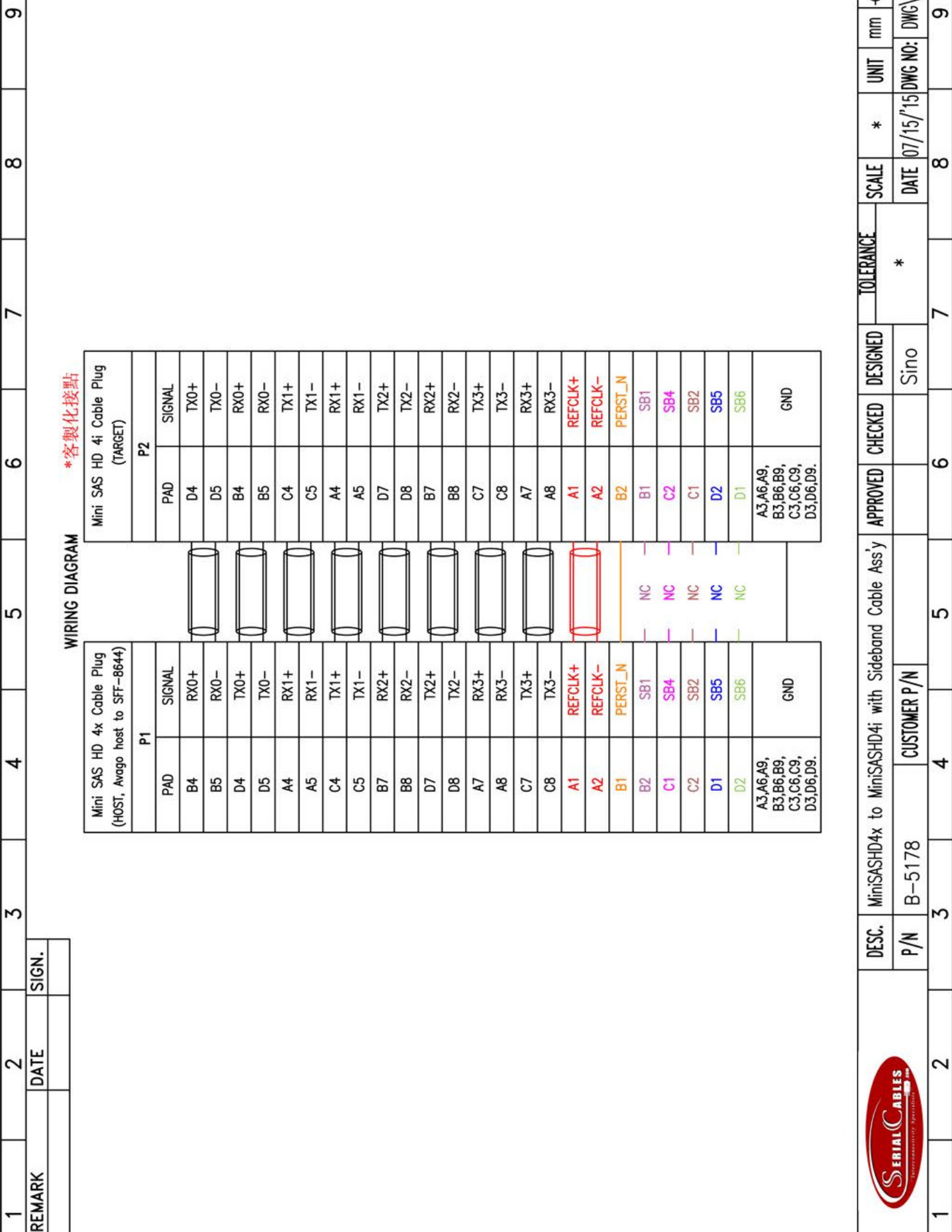


MATERIAL RoHS COMPLIANT:
 1.CABLE: MADISON 30AWG, 14G(P/N: 16KB2LF043)
 CONDUCTOR: 30AWG SOLID SILVER PLATED COPPER.
 INSULATION: FOAM POLYOLEFIN.
 PAIR: 2 SINGLES LAID FLAT AND PARALLEL.
 PAIR DRAIN WIRE: 30AWG SOLID SILVER PLATED COPPER.
 PAIR SHIELD: ALUMINUM/POLYESTER TAPE, ALUMINUM SIDE FACING IN, 25% OVERLAP.
 INNER SHIELD: ALUMINUM/POLYESTER TAPE, ALUMINUM SIDE FACING OUT, 25% OVERLAP.
 DIFFERENTIAL IMPEDANCE: 100±5 OHMS @1DR
 UL LISTING: TYPE CL2 AS SPECIFIED IN ARTICLE 725 OF THE NATIONAL ELECTRICAL CODE.
 2.CABLE: MADISON 30AWG, 10G(P/N: 02KB2LF019)

3.CONNECTOR:
 P1: SFF-8644 CABLE PLUG
 (1) P.C.B: GOLD PLATING ON CONTACT PADS.
 (P/N: MPCB-060003LF REV.A / MPCB-060004LF REV.A)
 (2) LATCH: STAINLESS STEEL
 (3) BACKSHELL- ZINC DIE CASTING HOOD/ NICKEL PLATING
 (4) PULL TAB: NYLON UL94V-0, COLOR: WHITE(MPS-5301004)
 (5) EMI SPRING SHIELDING
 P2: SFF-8643 SHORT TYPE CABLE PLUG
 (1) P.C.B: 4 LAYERS, GOLD PLATING ON CONTACT PADS, WITHOUT CARBON
 (P/N: MPCB-040125LF REV.A / MPCB-040126LF REV.A)
 (2) HOUSING: PBT, WHITE.



DESC.	MimiSASHD4x to MimiSASHD4i with Sideband Cable Assy	APPROVED	CHECKED	DESIGNED	TOLERANCE	SCALE	*	UNIT	mm
P/N	B-5178	CUSTOMER P/N	PCI-4443W-1M-S1N2	Sino					
							DATE	07/14/15	DWG NO: DWG B\5178



REV.	SIGN.
REMARK	DATE



DESC. MiniSASHD4x to MiniSASHD4i with Sideband Cable Assy
P/N B-5178

APPROVED	CHECKED	DESIGNED	TOLERANCE	SCALE	*	UNIT	mm
		Sino	*	DATE	07/15/15	DWG NO:	DWG\B\5178

1 2 3 4 5 6 7 8 9

F E D C B A