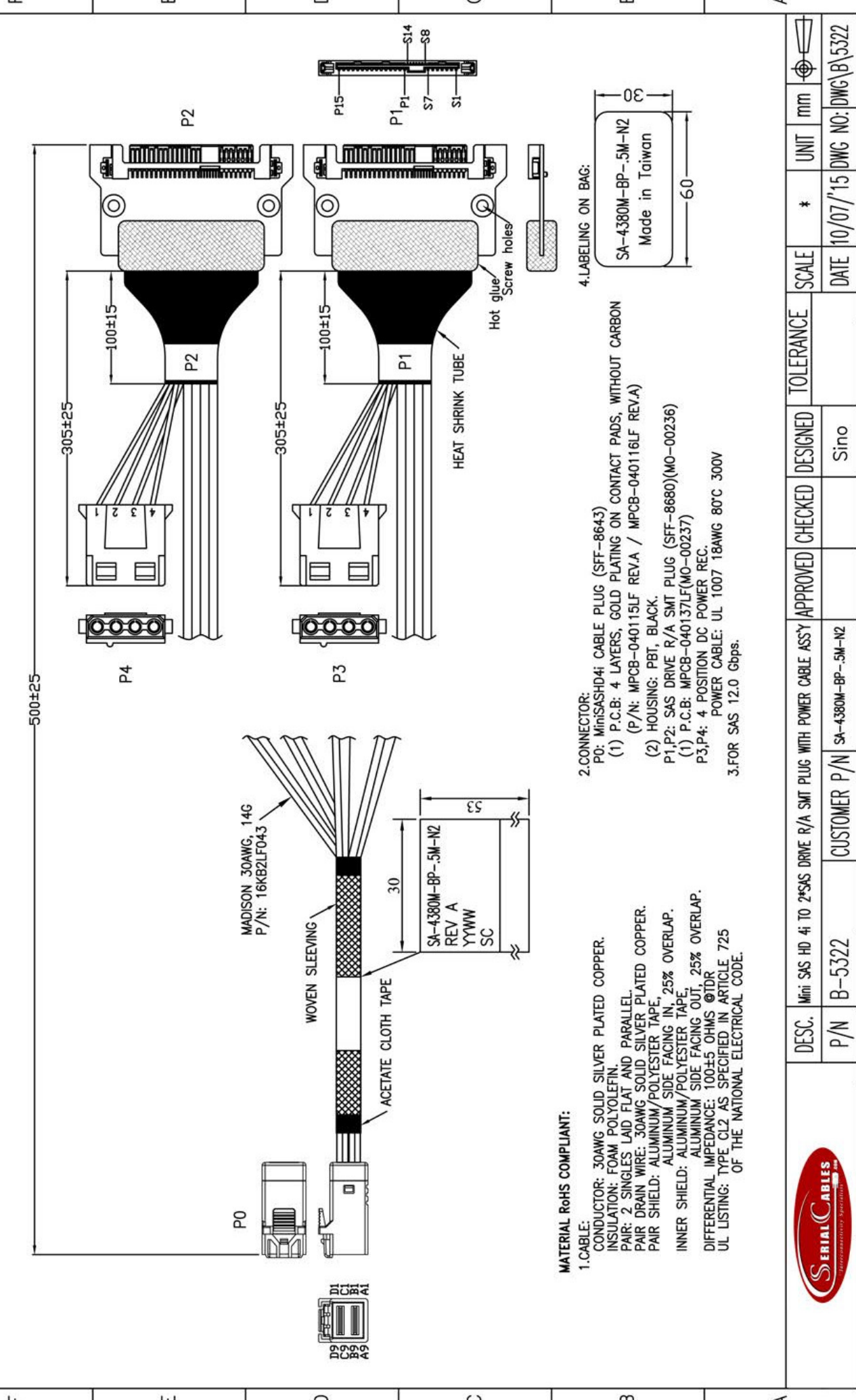


REV.	REMARK	DATE	SIGN.



MATERIAL RoHS COMPLIANT:

1.CABLE:
 CONDUCTOR: 30AWG SOLID SILVER PLATED COPPER.
 INSULATION: FOAM POLYOLEFIN.
 PAIR: 2 SINGLES LAD FLAT AND PARALLEL.
 PAIR DRAIN WIRE: 30AWG SOLID SILVER PLATED COPPER.
 PAIR SHIELD: ALUMINUM/POLYESTER TAPE.
 INNER SHIELD: ALUMINUM SIDE FACING IN, 25% OVERLAP.
 ALUMINUM SIDE FACING OUT, 25% OVERLAP.
 DIFFERENTIAL IMPEDANCE: 100±5 OHMS @TDR
 UL LISTING: TYPE CL2 AS SPECIFIED IN ARTICLE 725
 OF THE NATIONAL ELECTRICAL CODE.

2.CONNECTOR:
 P0: MiniSASHd4i CABLE PLUG (SFF-8643)
 (1) P.C.B: 4 LAYERS, GOLD PLATING ON CONTACT PADS, WITHOUT CARBON
 (P/N: MPCB-040115LF REV.A / MPCB-040116LF REV.A)
 (2) HOUSING: PBT, BLACK.
 P1,P2: SAS DRIVE R/A SMT PLUG (SFF-8680)(MO-00236)
 (1) P.C.B: MPCB-040137LF(MO-00237)
 P3,P4: 4 POSITION DC POWER REC.
 POWER CABLE: UL 1007 18AWG 80°C 300V
 3.FOR SAS 12.0 Gbps.

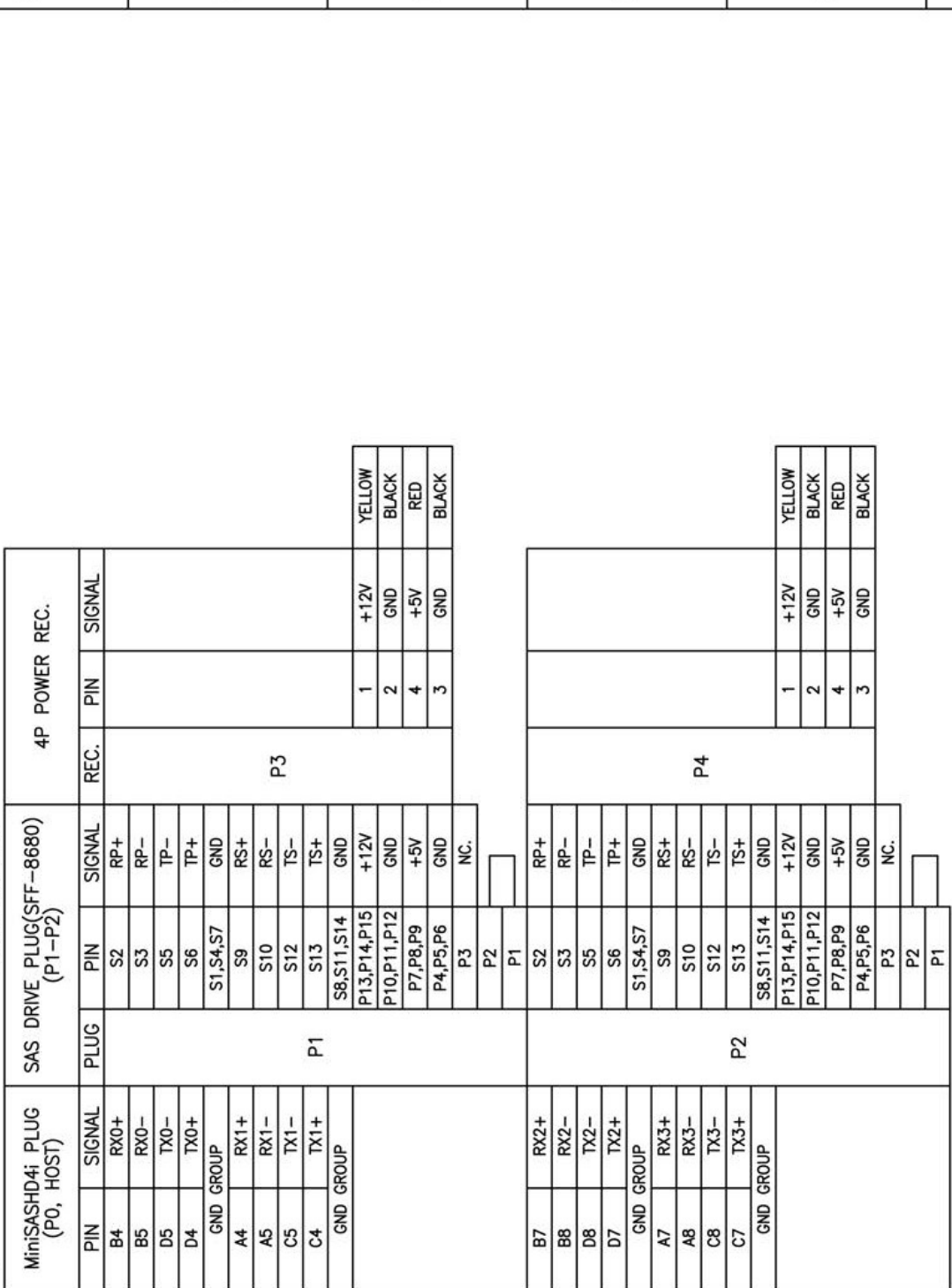
4.LABELING ON BAG:
 SA-4380M-BP-.5M-N2
 Made in Taiwan



DESC.	Mini SAS HD 4i to 2*SAS DRIVE R/A SMT PLUG WITH POWER CABLE ASSY	APPROVED	CHECKED	DESIGNED	TOLERANCE	SCALE	*	UNIT	mm
P/N	B-5322	CUSTOMER P/N	SA-4380M-BP-.5M-N2	Sino					
						DATE	10/07/15	DWG NO:	DWG(B)5322

1	2	3	4	5	6	7	8	9	
REV.	REMARK	DATE	SIGN.						

WIRING DIAGRAM



P0 GND GROUP:
A3,A6,A9,B3,B6,B9,
C3,C6,C9,D3,D6,D9.



DESC.	Mini SAS HD 4i TO 2*SAS DRIVE R/A SMT PLUG WITH POWER CABLE ASS'Y APPROVED	CHECKED	DESIGNED	TOLERANCE	SCALE	* DATE	UNIT
P/N	B-5322	CUSTOMER P/N	Sino			10/07/15 DWG NO: DWG\B\5322	mm