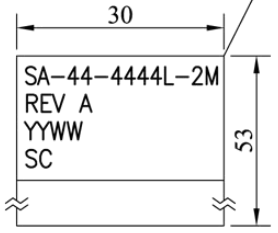
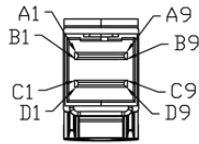
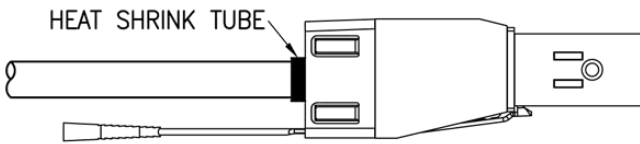
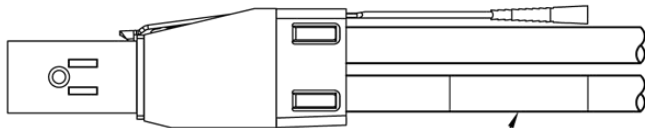
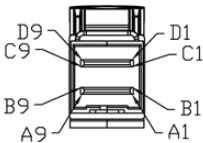
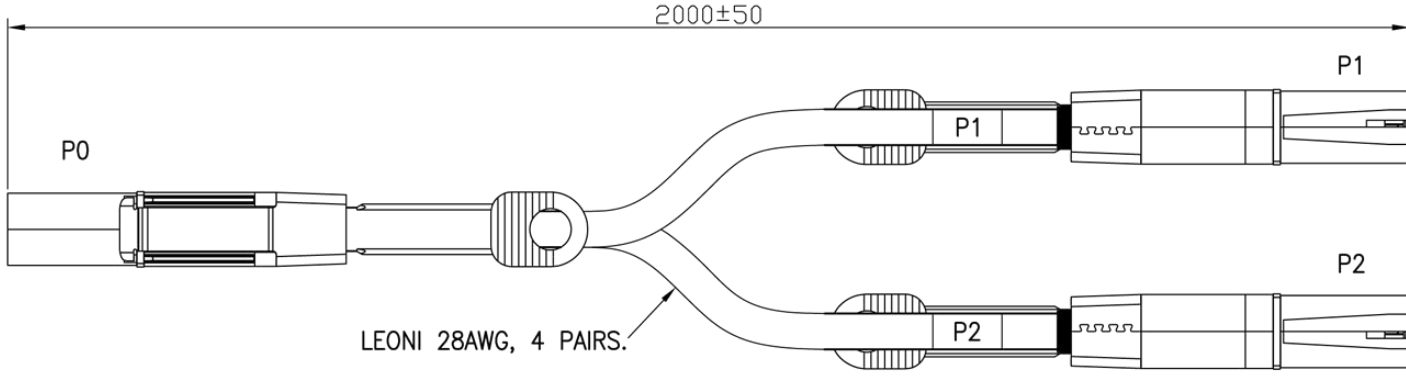


1	2	3	4	5	6	7	8	9
REV.	REMARK	DATE	SIGN.					

RoHS



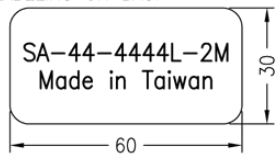
**MATERIAL RoHS COMPLIANT:**

- 1.CABLE:
  - CONDUCTOR: 28 AWG SOLID SILVER PLATED COPPER.
  - INSULATION: SKIN-FOAM-SKIN
  - PAIR: 2 WIRES, WH AND YE PARALLEL.
  - CORE: 4 PAIRS
  - PAIR DRAIN WIRE:  $\phi 0.25$  mm TINNED COPPER.
  - PAIR SHIELD: ALUMINUM FOIL OVERLAPPED, ALU INSIDE.
  - INNER SHIELD: ALUMINUM FOIL OVERLAPPED, APPLIED LONGITUDINALLY.
  - OUTER SHIELD: 38 AWG TINNED COPPER BRAID, 85% COVERAGE.
  - DIAMETER:  $5.6 \pm 0.2$  mm
  - PRINT LEGEND: "LEONI High Speed Cables ParaLink<sup>®</sup>-11 100 $\Omega$  4pairs 28AWG (shielded) (UL) E116441 CL2 75°C"
  - DIFFERENTIAL IMPEDANCE: 100 $\pm 5$  OHM.

**2.CONNECTOR:**

- P0,P1,P2: Mini SAS HD 4x CABLE PLUG (SFF-8644)
  - (1) P.C.B: 6 LAYERS, GOLD PLATING ON CONTACT PADS.
  - (2) LATCH: STAINLESS STEEL
  - (3) BACKSHELL- ZINC DIE CASTING HOOD/ NICKEL PLATING
  - (4) PULL TAB: NYLON UL94V-0, COLOR: BLUE.
  - (5) EMI GASKET.
- 3.TWO-WIRED SERIAL MEMORY: ATMEL AT24C02B EEPROM (256 BYTES).

**4.LABELING ON BAG:**



DESC.	Mini SAS HD 4x/Mini SAS HD 4x*2 CABLE ASS'Y	APPROVED	CHECKED	DESIGNED	TOLERANCE	SCALE	*	UNIT	mm	
P/N	UASS-RC005358	CUSTOMER P/N	SA-44-4444L-2M	Sino		DATE	04/10/'12	DWG NO:	DWG\RC\5358	

REV.	REMARK	DATE	SIGN.

### WIRING DIAGRAM

HIGH SPEED SIGNAL				
P0(Mini SAS HD 4x Plug)		Mini SAS HD 4x Plug		
PIN	SIGNAL	PAD	SIGNAL	
B4	RX0+	D4	TX0+	P1
B5	RX0-	D5	TX0-	
D4	TX0+	B4	RX0+	
D5	TX0-	B5	RX0-	
A4	RX1+	C4	TX1+	P2
A5	RX1-	C5	TX1-	
C4	TX1+	A4	RX1+	
C5	TX1-	A5	RX1-	
B7	RX2+	D4	TX0+	
B8	RX2-	D5	TX0-	
D7	TX2+	B4	RX0+	
D8	TX2-	B5	RX0-	
A7	RX3+	C4	TX1+	P2
A8	RX3-	C5	TX1-	
C7	TX3+	A4	RX1+	
C8	TX3-	A5	RX1-	

GND GROUP 1:  
P0-A3,A6,A9,B3,B6,B9, P1,P2-C3,C6,C9,D3,D6,D9

GND GROUP 2:  
P0-C3,C6,C9,D3,D6,D9, P1,P2-A3,A6,A9,B3,B6,B9

P0 Connector Shell	P1,P2 Connector Shell
--------------------	-----------------------

LOW SPEED SIGNAL & POWER		
PAD	SIGNAL	
A1	Reserved	N.C.
A2	IntL	N.C.
B1	Vact	N.C.
B2	ModPrsL	▷ GND
C1	SCL	
C2	SDA	
D1	Vact	○ Vman
D2	Vman	○ Vman



DESC.	Mini SAS HD 4x/Mini SAS HD 4x*2 CABLE ASS'Y	APPROVED	CHECKED	DESIGNED	TOLERANCE	SCALE	*	UNIT	mm	
P/N	UASS-RC005358	CUSTOMER P/N		Sino	*	DATE	04/10/'12	DWG NO:	DWG\RC\5358	