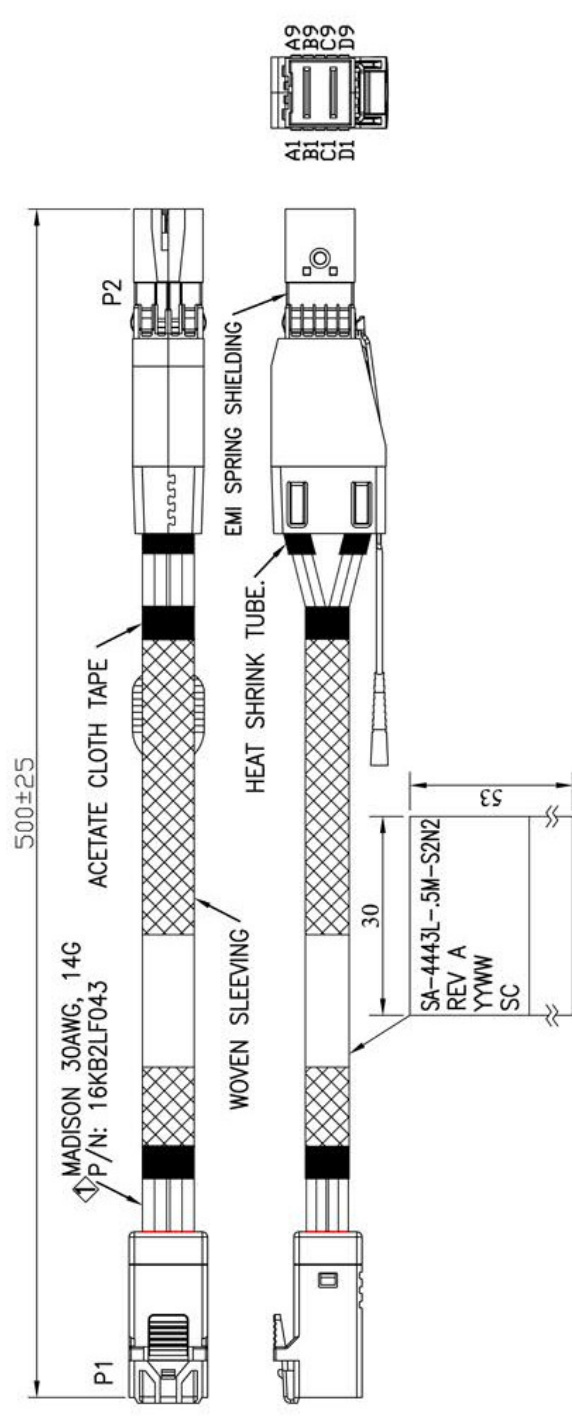


RoHS

REV.	REMARK	DATE	SIGN.
1	CHANGE CABLE	08/19/14	Sino



MATERIAL RoHS COMPLIANT:

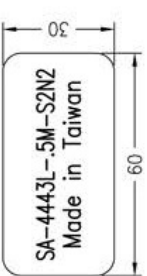
- 1. CABLE:
 - CONDUCTOR: 30AWG SOLID SILVER PLATED COPPER.
 - INSULATION: FOAM POLYOLEFIN.
 - PAIR: 2 SINGLES LAID FLAT AND PARALLEL.
 - PAIR DRAIN WIRE: 30AWG SOLID SILVER PLATED COPPER.
 - PAIR SHIELD: ALUMINUM/POLYESTER TAPE, ALUMINUM SIDE FACING IN, 25% OVERLAP.
 - INNER SHIELD: ALUMINUM/POLYESTER TAPE, ALUMINUM SIDE FACING OUT, 25% OVERLAP.
 - DIFFERENTIAL IMPEDANCE: 100±5 OHMS @TDR
 - UL LISTING: TYPE CL2 AS SPECIFIED IN ARTICLE 725 OF THE NATIONAL ELECTRICAL CODE.

2. CONNECTOR:

- P1: Mini SAS HD 4i CABLE PLUG (SFF-8643)
 - (1) P.C.B: 4 LAYERS, GOLD PLATING ON CONTACT PADS, WITHOUT CARBON (P/N: MPCB-040115LF REV.A / MPCB-040116LF REV.A)
 - (2) HOUSING: PBT, BLACK.
- P2: Mini SAS HD 4x CABLE PLUG (SFF-8644)
 - (1) P.C.B: 4 LAYERS, GOLD PLATING ON CONTACT PADS, WITHOUT CARBON (P/N: MPCB-040113LF REV.A / SPCB-040114A)
 - (2) LATCH: STAINLESS STEEL
 - (3) BACKSHELL- ZINC DIE CASTING HOOD/ NICKEL PLATING
 - (4) PULL TAB: NYLON UL94V-0, COLOR: BLUE.
 - (5) EMI SPRING SHIELDING

3. TWO-WIRED SERIAL MEMORY: ATMEL AT24C02B EEPROM (256 BYTES).

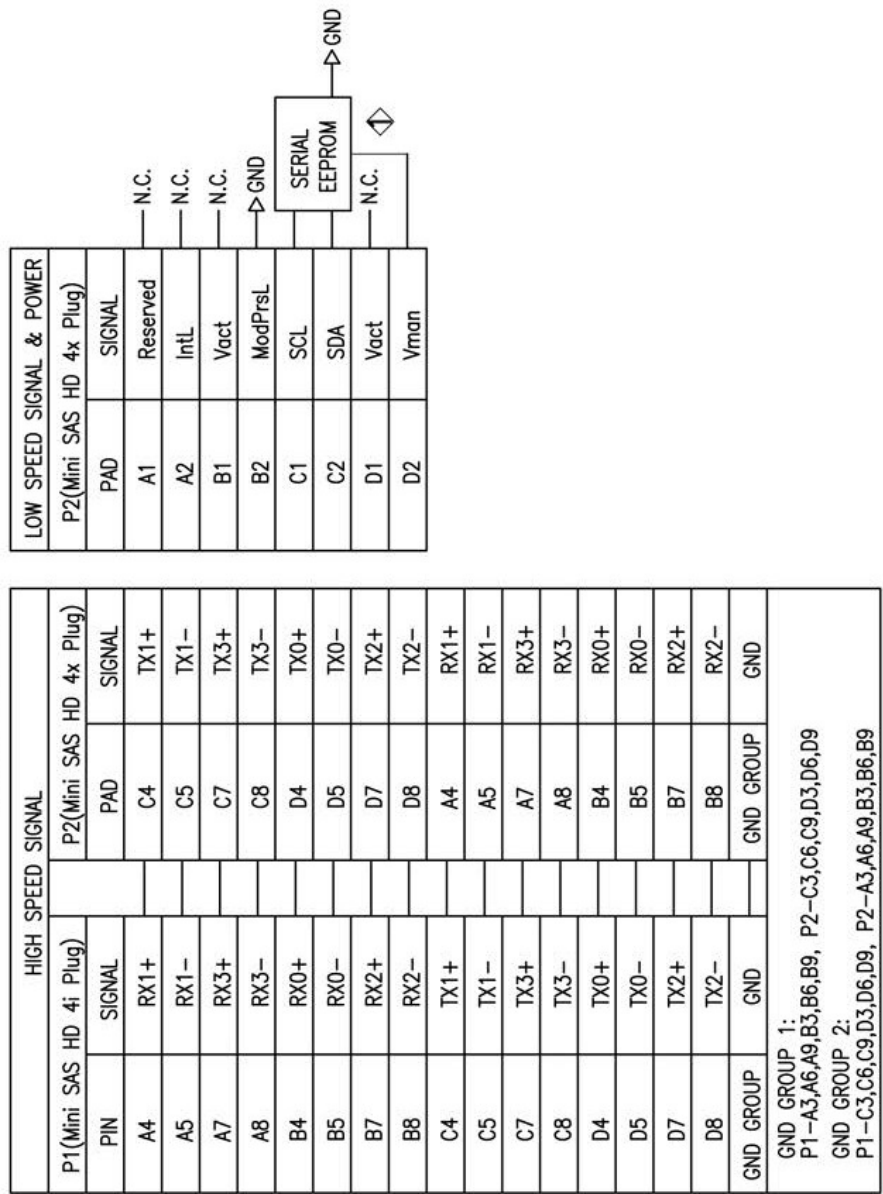
4. LABELING ON BAG:



DESC.	Mini SAS HD 4i/Mini SAS HD 4x CABLE ASS'Y	APPROVED	CHECKED	DESIGNED	TOLERANCE	SCALE	*	UNIT	mm
P/N	UA55-RC006062			Sino			DATE	08/19/14	DWG NO: DWG\RC\6062

REV. REMARK	DATE	SIGN.
◇ REVERSE LOW SPEED SIGNAL & POWER	08/19/14	Sino

WIRING DIAGRAM



DESC.	Mini SAS HD 4i/Mini SAS HD 4x CABLE ASS'Y	APPROVED	CHECKED	DESIGNED	TOLERANCE	SCALE	* DATE	UNIT	mm
P/N	UASS-RC006062			Sino	*	DATE	08/19/14	DWG NO:	DWG\RC\6062