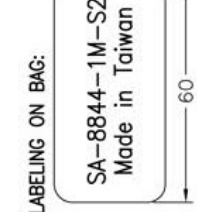
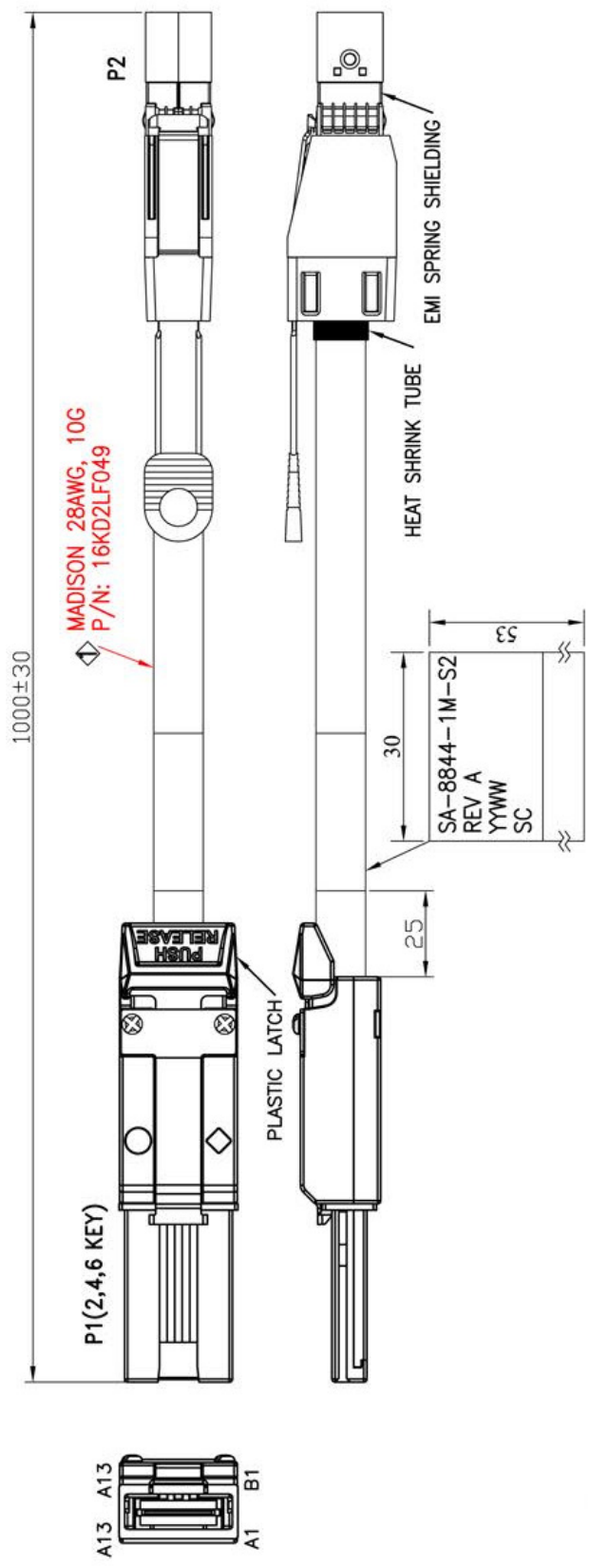




REV.	REMARK	DATE	SIGN.
1	CHANGE CABLE	10/04/13	Sino



2. CONNECTOR:
- P1: Mini SAS 4x CABLE PLUG - 26CKT CONNECTOR (SFF-8088)
    - (1) P.C.B: 4 LAYERS, GOLD PLATING ON CONTACT PADS.
    - (2) LATCH: STAINLESS STEEL
    - (3) BACKSHELL- ZINC DIE CASTING HOOD/ NICKEL PLATING
    - (4) WITH EXTERNAL UNIVERSAL KEY
  - P2: Mini SAS HD 4x CABLE PLUG (SFF-8644)
    - (1) P.C.B: 4 LAYERS, GOLD PLATING ON CONTACT PADS, WITHOUT CARBON (P/N: MPCB-040113JF REVA / SPCB-040114A)
    - (2) LATCH: STAINLESS STEEL.
    - (3) BACKSHELL- ZINC DIE CASTING HOOD/ NICKEL PLATING
    - (4) PULL TAB: NYLON UL94V-0, COLOR: BLUE.
    - (5) EMI SPRING SHIELDING

- MATERIAL RoHS COMPLIANT:
- CABLE:
    - CONDUCTOR: 28AWG SOLID SILVER PLATED COPPER.
    - INSULATION: FOAM POLYOLEFIN
    - PAIR: 2 SINGLES LAID FLAT AND PARALLEL.
    - CORE: 8 PAIRS
    - PAIR DRAIN WIRE: 30AWG SOLID TIN PLATED COPPER.
    - PAIR SHIELD: ALUMINUM/POLYESTER TAPE. ALUMINUM SIDE FACING IN, 25% OVERLAP.
    - INNER SHIELD: ALUMINUM/POLYESTER TAPE, ALUMINUM SIDE FACING OUT, 25% OVERLAP.
    - OUTER SHIELD: 38AWG TIN PLATED COPPER BRAID, 85% COVERAGE.
    - JACKET: FLEXIBLE PVC, COLOR - BLACK.
    - DIAMETER:  $7.88 \pm 0.25$ mm
  - PRINT LEGEND: "MADISON CABLE {Mfg. Location Codew} (UL) TYPE CL2 75C 28AWG CSA AWM II A/B 75C 30V FT4 TurboTwin<sup>®</sup> SUBSTANCE COMPLIANT 2011/65/EU {D/C}"
  - DIFFERENTIAL IMPEDANCE:  $100 \pm 5$  OHMS @TDR
  - UL LISTING: TYPE CL2 AS SPECIFIED IN ARTICLE 725 OF THE NATIONAL ELECTRICAL CODE.
  - FOR SAS 6.0 Gbps.
  - TWO-WIRED SERIAL MEMORY: ATMEL AT24C02B EEPROM (256 BYTES).

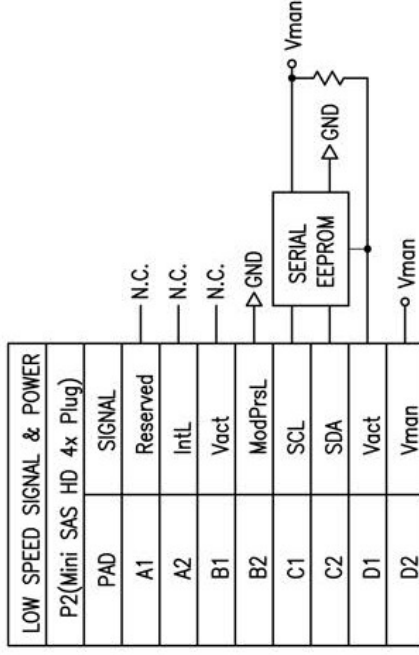


DESC.	Mini SAS 4x/Mini SAS HD 4x CABLE ASS'Y	APPROVED	CHECKED	DESIGNED	TOLERANCE	SCALE	*	UNIT	mm
P/N	UASS-RC006030			Sino					
	CUSTOMER P/N	SA-8844-1M-S2							
						DATE	10/04/13	DWG NO:	DWG/RC/6030

REV.	REMARK	DATE	SIGN.

**WIRING DIAGRAM**

HIGH SPEED SIGNAL			LOW SPEED SIGNAL & POWER		
P1(Mini SAS 4x Plug)			P2(Mini SAS HD 4x Plug)		
PIN	SIGNAL	PAD	SIGNAL	PAD	SIGNAL
A2	RX0+	D4	TX0+	A1	Reserved
A3	RX0-	D5	TX0-	A2	IntL
A5	RX1+	C4	TX1+	B1	Vact
A6	RX1-	C5	TX1-	B2	ModPrsL
A8	RX2+	D7	TX2+	C1	SCL
A9	RX2-	D8	TX2-	C2	SDA
A11	RX3+	C7	TX3+	D1	Vact
A12	RX3-	C8	TX3-	D2	Vman
B2	TX0+	B4	RX0+		
B3	TX0-	B5	RX0-		
B5	TX1+	A4	RX1+		
B6	TX1-	A5	RX1-		
B8	TX2+	B7	RX2+		
B9	TX2-	B8	RX2-		
B11	TX3+	A7	RX3+		
B12	TX3-	A8	RX3-		
GND GROUP	GND	GND GROUP	GND		
GND GROUP: A1,A4,A7,A10,A13, B1,B4,B7,B10,B13.		GND GROUP: A3,A6,A9,B3,B6,B9, C3,C6,C9,D3,D6,D9.			
Connector Shell		Connector Shell			



DESC.	Mini SAS 4x/Mini SAS HD 4x CABLE ASS'Y
P/N	UASS-RC006030
CUSTOMER P/N	

SCALE	*	UNIT	mm
DATE	03/01/13	DWG NO:	DWG\RC\6030

TOLERANCE	*
DESIGNED	Sino
CHECKED	
APPROVED	