

REV.	REMARK	DATE	SIGN.
◇	REVISE CUSTOMER P/N	09/02/'13	Sino

MATERIAL RoHS COMPLIANT:

1.CABLE:

CONDUCTOR: 30 AWG SOLID SILVER PLATED COPPER.

INSULATION: SKIN-FOAM-SKIN

PAIR: 2 WIRES, WH AND YE PARALLEL

PAIR DRAIN WIRE: #0.2 mm (32AWG) TINNED COPPER.

PAIR SHIELD: ALUMINUM FOIL OVERLAPPED, ALU INSIDE.

DIFFERENTIAL IMPEDANCE: 100±5 OHM.

2.CONNECTOR:

P0: Mini SAS HD 4i CABLE PLUG (SFF-8643)

(1) P.C.B: 4 LAYERS, GOLD PLATING ON CONTACT PADS, WITHOUT CARBON

(P/N: MPCB-040115LF REV.A / MPCB-040116LF REV.A)

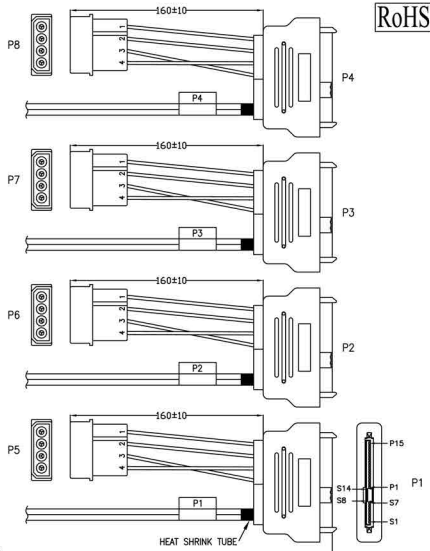
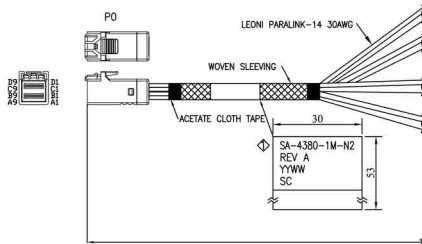
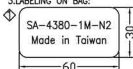
(2) HOUSING: PBT, BLACK.

P1-P4: SAS DRIVE REC.(SFF-8680)(MSAS-F29S001G)

P5-P8: 4 POSITION DC POWER PLUG

POWER CABLE: UL 1007 18AWG 80°C 300V

3.LABELING ON BAG:



RoHS

Serial Cables, LLC

DESC.	APPROVED	CHECKED	DESIGNED	TOLERANCE	SCALE	*	UNIT	mm	◇
P/N	UASS-RC005926	CUSTOMER P/N	SA-4380-1M-N2	Sino	DATE	09/02/'13	DWG NO:	DWG\RC\5926	

